

Backplate Replacement Guide

How to Replace a Missing or Damaged Backplate



WARNING

Sharp edges. Watch your fingers.

WHEN USING ELECTRICAL APPLIANCES, BASIC PRECAUTIONS SHOULD ALWAYS BE FOLLOWED TO REDUCE THE RISK OF FIRE, ELECTRIC SHOCK, AND INJURY TO PERSONS, INCLUDING THE FOLLOWING:

1. Read all instructions before installing or using the cover.
2. Sharp edges and corners may be present on the baseboard cover panel. Any sharp edges will be covered after installation using the proper end cap. Please use caution during installation to avoid injury.
3. To avoid fire do not block air intakes or exhaust in any manner.
4. Do not insert or allow foreign objects to enter any ventilation or exhaust opening as this may cause and electric shock or fire, or damage the heater.
5. This heater cover is hot when in use. To avoid burns, do not let bare skin touch hot surfaces. Keep combustible materials such as furniture, pillows, bedding, papers, and curtains away from heater.



Why use a replacement backplate?

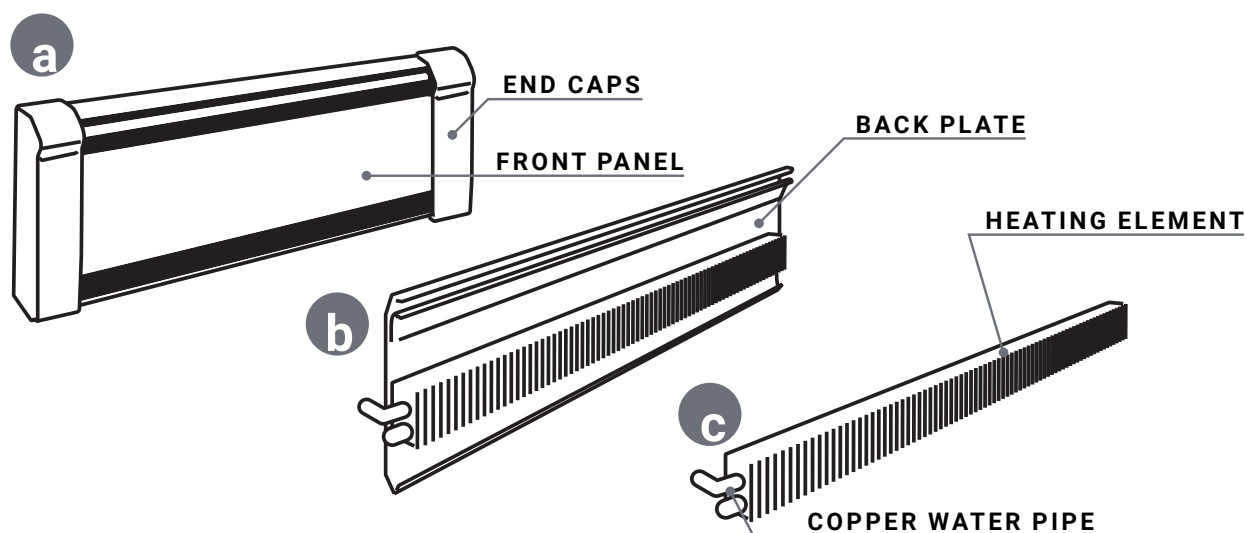
- Veil®'s replacement backplate is designed to take the place of a missing or damaged backplate.
- It is designed to offer support to the heating element and pipe, as well as act as a thermal shield between the heating element and the wall.
- It is a purpose-built, secure and simple support for Veil® baseboard covers.
- The replacement backplates are easily installed with the provided screws and hardware.
- Made from 16-gauge aluminium with a black powder coat protective finish, Veil® replacement backplates will never rust.
- If you need to trim the replacement backplate to fit, simply use a pair of tin snips to cut to your desired length.

Hardware included with your backplate:

We made this chart so you can double-check the contents of your backplate set before taking apart your heater.

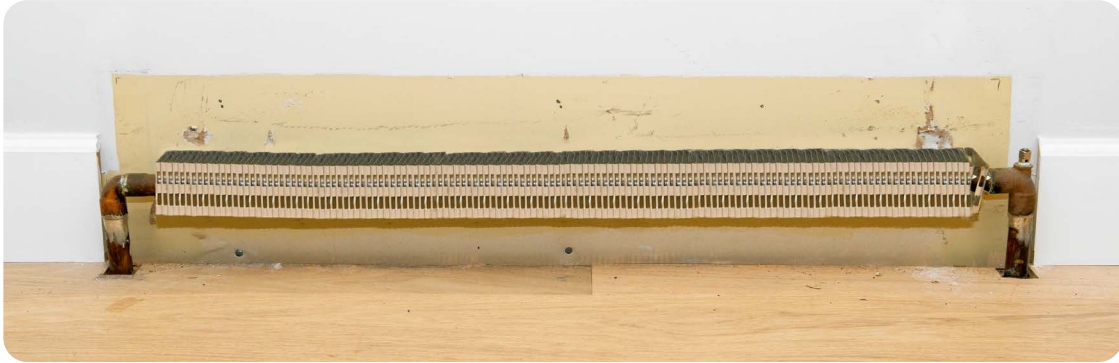
Length	No. of Brackets	No. of Screws	
2 ft	2 brackets	6 screws	1 screw per bracket (Step 4) + 4 to attach backplate to wall (Step 3)
3 ft	2 brackets	8 screws	1 screw per bracket (Step 4) + 6 to attach backplate to wall (Step 3)
4 ft	3 brackets	11 screws	1 screw per bracket (Step 4) + 8 to attach backplate to wall (Step 3)
5 ft	4 brackets	14 screws	1 screw per bracket (Step 4) + 10 to attach backplate to wall (Step 3)
6 ft	5 brackets	17 screws	1 screw per bracket (Step 4) + 12 to attach backplate to wall (Step 3)
7 ft	6 brackets	20 screws	1 screw per bracket (Step 4) + 14 to attach backplate to wall (Step 3)
8 ft	7 brackets	23 screws	1 screw per bracket (Step 4) + 16 to attach backplate to wall (Step 3)

Parts of a hydronic baseboard heater:



1 Remove the existing backplate.

Ensure that the previous backplate has been fully removed and any screws, nails or fasteners have also been removed. You should be starting with only the copper pipe and heating element present.



2 Slide the replacement backplate behind the heating element.

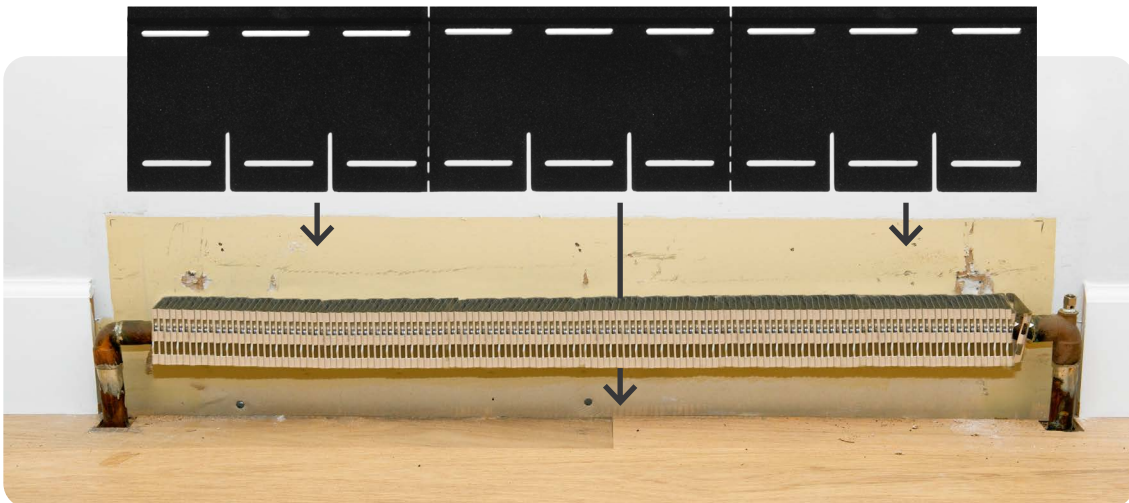
Be sure that the replacement backplate is oriented properly. The top of the replacement backplate should leave a small gap between itself and the wall.

For standard baseboard covers (Atlas, Titan, Demi):

Let the backplate rest on the floor. The height is 7 ½", ideal for installing our standard baseboard covers.

For Atlas XL baseboard covers:

Leave a space of 2 ¼" inches between the bottom of the backplate and the floor, ensuring that the top of the backplate is 9 ¾" from the floor.



Did you know?

Not all floors are level. Be sure to use a level to check your backplate is level across the entire length. Adjust backplate as needed.

**Did you know?**

For the strongest hold, always try to locate the studs and screw directly into them. If the studs don't line up or you can't find them, use anchors or plastic plugs to create a strong connection to the wall.

**3****Secure the backplate to the wall.**

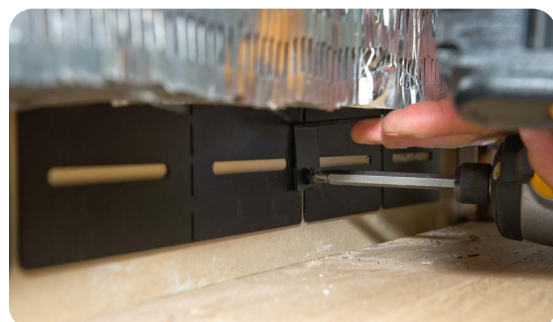
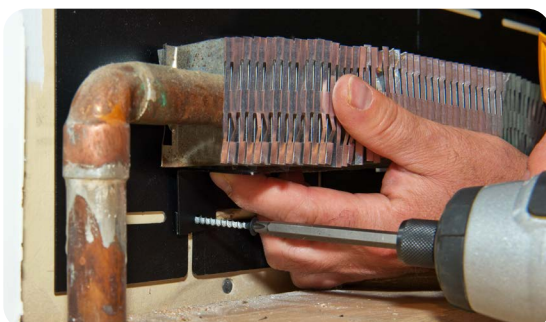
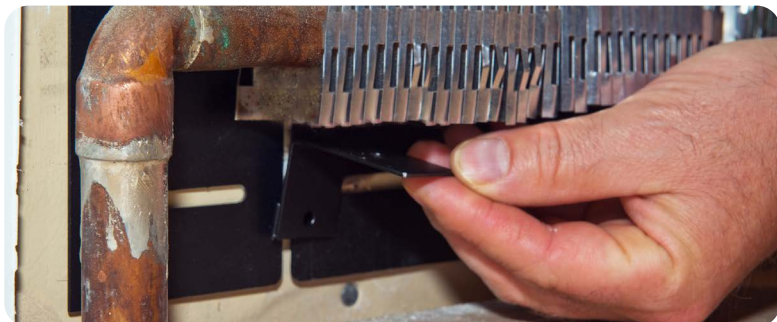
Using the black screws provided (2 per foot), insert screws into horizontal openings on the backplate and secure using a drill or screwdriver.

**4****Place brackets under heating element.**

Place the provided L-brackets under the heating element (fins) as shown below and insert the provided black screws through the L-Bracket and into the vertical openings in the backplate. The L-brackets should be touching the underside of the element, providing support. Evenly place the provided L-brackets along the underside of the element for a uniform level of support.

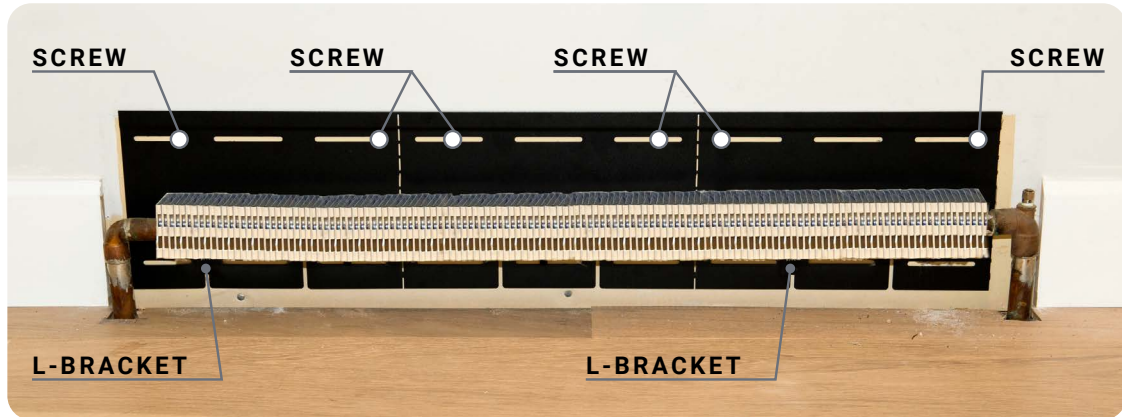
ELEMENT
SUPPORT

WALL SIDE



5 Check the backplate and brackets.

Check that the replacement backplate is secure and that the L-brackets are also secure.



example of 3-foot backplate installation

6 Install Veil® heater covers.

Install your Veil® baseboard heater cover by inserting the fold on the top & back of the cover into the top gap between the backplate and the wall. The gap provided for this should allow the cover to slip in easily and be secure. Attach the left and right endcaps and you are done!



**For more
information on
installing your
cover:**

See our product-specific
installation guides.

[SEE GUIDES](#)



Questions? Call us.

Visit coversbyveil.com/contact-us or call us at 1-833-567-5050.

[CONTACT US](#)